



**Celeste "Sally" Cheeseman**

Realtor Associate®, e-PRO®

Direct Contact: (808) 375-1404

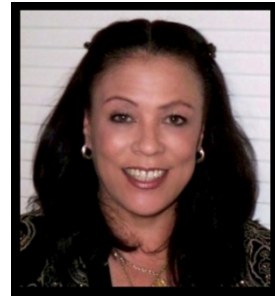
Office: (808) 625-1776

Fax: (808) 625-5582

Email: [celestecheeseman@hawaii.rr.com](mailto:celestecheeseman@hawaii.rr.com)

Website: [www.hawaiihomesmarket.com](http://www.hawaiihomesmarket.com)

Blog: [www.cheesemanhomes.com](http://www.cheesemanhomes.com)



## 2009 Military Housing Allowance

Monthly BAH (Basic Allowance for Housing) for Honolulu County.

The VA mortgage cap for 100% financing in Honolulu County is: \$783,750.  
(Larger amounts will require some down payment.)

RANK	WITH DEPENDANTS	WITHOUT DEPENDANTS
E-1	\$1,949	\$1,555
E-2	\$1,985	\$1,555
E-3	\$1,985	\$1,555
E-4	\$1,985	\$1,555
E-5	\$2,043	\$1,757
E-6	\$2,247	\$1,868
E-7	\$2,403	\$1,955
E-8	\$2,545	\$2,088
E-9	\$2,745	\$2,160
W-1	\$2,276	\$1,913
W-2	\$2,461	\$2,087
W-3	\$2,633	\$2,167

RANK	WITH DEPENDANTS	WITHOUT DEPENDANTS
W-4	\$2,788	\$2,306
W-5	\$2,967	\$2,434
O-1E	\$2,431	\$2,043
O-2E	\$2,607	\$2,144
O-3E	\$2,816	\$2,274
O-1	\$2,069	\$1,855
O-2	\$2,269	\$2,011
O-3	\$2,627	\$2,191
O-4	\$3,043	\$2,416
O-5	\$3,334	\$2,502
O-6	\$3,361	\$2,633
O-7+	\$3,401	\$2,686

E= enlisted

W= warrant officers

O-1E= officers with enlisted experience

O-1= commissioned officers with no prior enlisted experience