



Celeste "Sally" Cheeseman

Realtor Associate®, e-PRO®

Direct Contact: (808) 375-1404

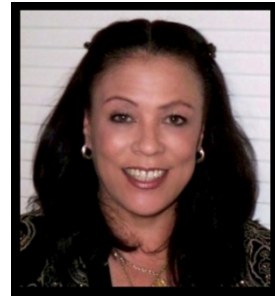
Office: (808) 625-1776

Fax: (808) 625-5582

Email: celestecheeseman@hawaii.rr.com

Website: www.hawaiihomesmarket.com

Blog: www.cheesemanhomes.com



2010 Military Housing Allowance

Monthly BAH (Basic Allowance for Housing) for Honolulu County.

The VA mortgage cap for 100% financing in Honolulu County is: \$700,000.
(Larger amounts will require some down payment.)

RANK	WITH DEPENDANTS	WITHOUT DEPENDANTS
E-1	\$2,001	\$1,572
E-2	\$2,001	\$1,572
E-3	\$2,001	\$1,572
E-4	\$2,001	\$1,572
E-5	\$2,094	\$1,794
E-6	\$2,245	\$1,917
E-7	\$2,553	\$2,004
E-8	\$2,670	\$2,163
E-9	\$2,808	\$2,274
W-1	\$2,448	\$1,965
W-2	\$2,601	\$2,160
W-3	\$2,745	\$2,283

RANK	WITH DEPENDANTS	WITHOUT DEPENDANTS
W-4	\$2,832	\$2,472
W-5	\$2,934	\$2,580
O-1E	\$2,577	\$2,094
O-2E	\$2,724	\$2,250
O-3E	\$2,847	\$2,445
O-1	\$2,133	\$1,905
O-2	\$2,439	\$2,061
O-3	\$2,739	\$2,319
O-4	\$2,973	\$2,585
O-5	\$3,138	\$2,634
O-6	\$3,168	\$2,745
O-7+	\$3,201	\$2,799

E= enlisted

W= warrant officers

O-1E= officers with enlisted experience

O-1= commissioned officers with no prior enlisted experience